

## Example 2.1 Motion Tween

This example shows the basics of creating a motion tween using a symbol called "bee". The "bee" moves from the top right to the bottom left of the stage. Then a guide layer is added to get the "bee" to follow a specific path created by the user.

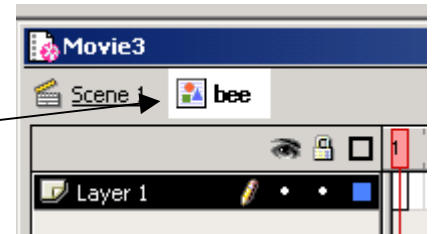
Step 1: Start a new Movie

- **File > New**

Step 2: Create a new Graphic Symbol called bee

- **Insert > New Symbol**
- **Select graphic radio button**

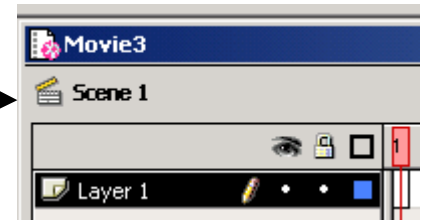
Note at the top left (above the timeline) that your current stage location is no longer "Scene 1", but the symbol "bee"



Step 3: Make a sketch of a bee on the center of the stage

Step 4: Move back to main scene

- **Click on "Scene 1"**



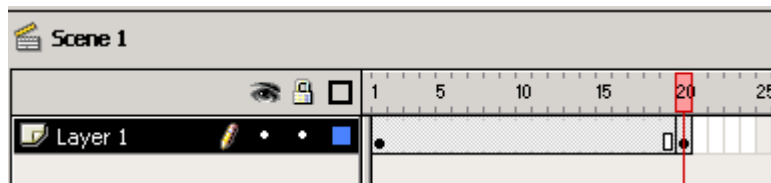
Step 5: Open the Library for this Movie

- **Window > Library**

Step 6: Drag an instance of the bee symbol on to the top left of the stage

Step 7: Insert a Key Frame in frame 20

- **Select frame 20**
- **Insert > Key Frame or <F6>**



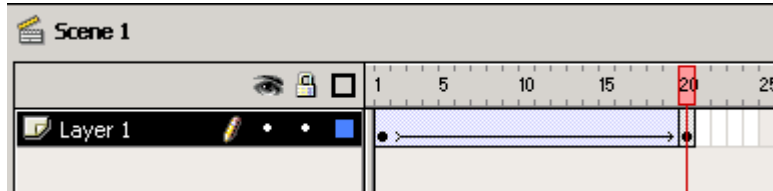
## Example 2.1 Motion Tween (cont.)

---

Step 8: While still in frame 20 drag the bee symbol to the bottom right corner of the stage

Step 9: Create Motion Tween from frame 1 to frame 20

- **Select frame 1**
- **Insert > Create Motion Tween**




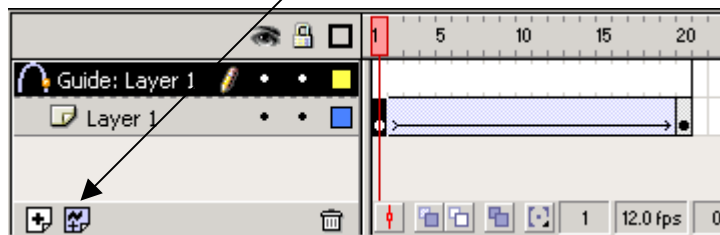
Step 10: Preview the movie (the bee should tween to the lower left part of the stage)

- **<ENTER> or <F12> or <CTRL><ENTER>**

### Adding a Guide Layer to Motion Tween

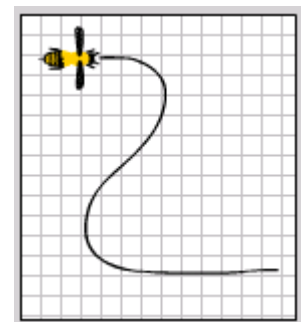
Step 11: Add a guide layer for the bee's motion tween

- **Select frame 1**
- **Click add guide layer button** 



Step 12: Add a guide wire for the bee's motion tween

- **In the guide layer select the paint brush tool draw a smooth s-curve as shown**



Step 13: Test the movie in Flash

- **<ENTER> or <F12> or <CTRL><ENTER>**

Notice the bee did not follow the path, that's because we need to snap the bee symbol in both key frames 1 & 20 to the ends of the guide wire. (Steps 14 & 15)

## Example 2.1 Motion Tween (cont.)

---

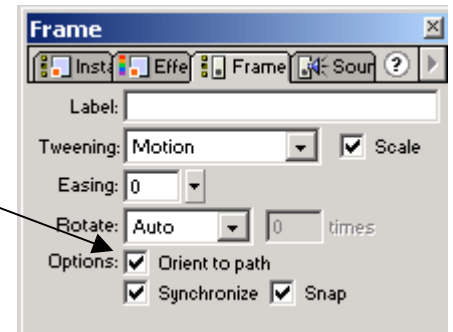
- Step 14: Connect the bee symbol in frame 1 to the start of the guide wire
- **Select bee Layer**
  - **Select frame 1**
  - **With the arrow tool select the bee symbol by clicking on it once**
  - **Move the bee symbol until the "+" snaps to the end of the line from the guide layer**

If you can't find the "+" symbol there are two possibilities:

- 1) It might be within the bee symbol
- 2) You didn't center the bee when you drew it at the beginning  
(Edit the symbol and move the bee to approx. the center of the stage)

- Step 15: Connect the bee symbol in frame 20 to the end of the guide wire
- **Select frame 20**
  - **With the arrow tool select the bee symbol by clicking on it once**
  - **Move the bee symbol until the "+" snaps to the end of the line from the guide layer.**

- Step 16: Orient the bee to the guide wire using the frame panel
- **Select layer 1, click on frame 1**
  - **Check Orient to path**
  - **From the frame panel (Window > Panels > Frame)**



- Step 17: Preview the movie  
(The bee should follow the line during its tween)
- **<ENTER> or <F12> or <CTRL><ENTER>**